

# Open Source Geospatial Foundation

## Globally powering SDIs



Jorge Gaspar Sanz Salinas  
jsanz@prodevelop.es

Arnulf Benno Christl  
arnulf@osgeo.org

**FOSS4G 2009 - Sydney, Australia**

# Agenda

- **Free Software** Licenses **FS**
- **Open Source** Methodology **OS**
- **What is OSGeo?** **FOSS4G**
  - Mission and Tasks
- Formal **Structures**
- **FOSS4G Conference & Fair**
- **Summary**

# Free Software Licensing

**Free Software** is a licensing model

- Not as in "free beer" but as in **free speech**
- **You are free** to:
  - use it **anywhere** for **any purpose**
  - **understand** and **improve** it
  - **pass it on** to anybody else
  - make **Money** by using, improving and providing services around it

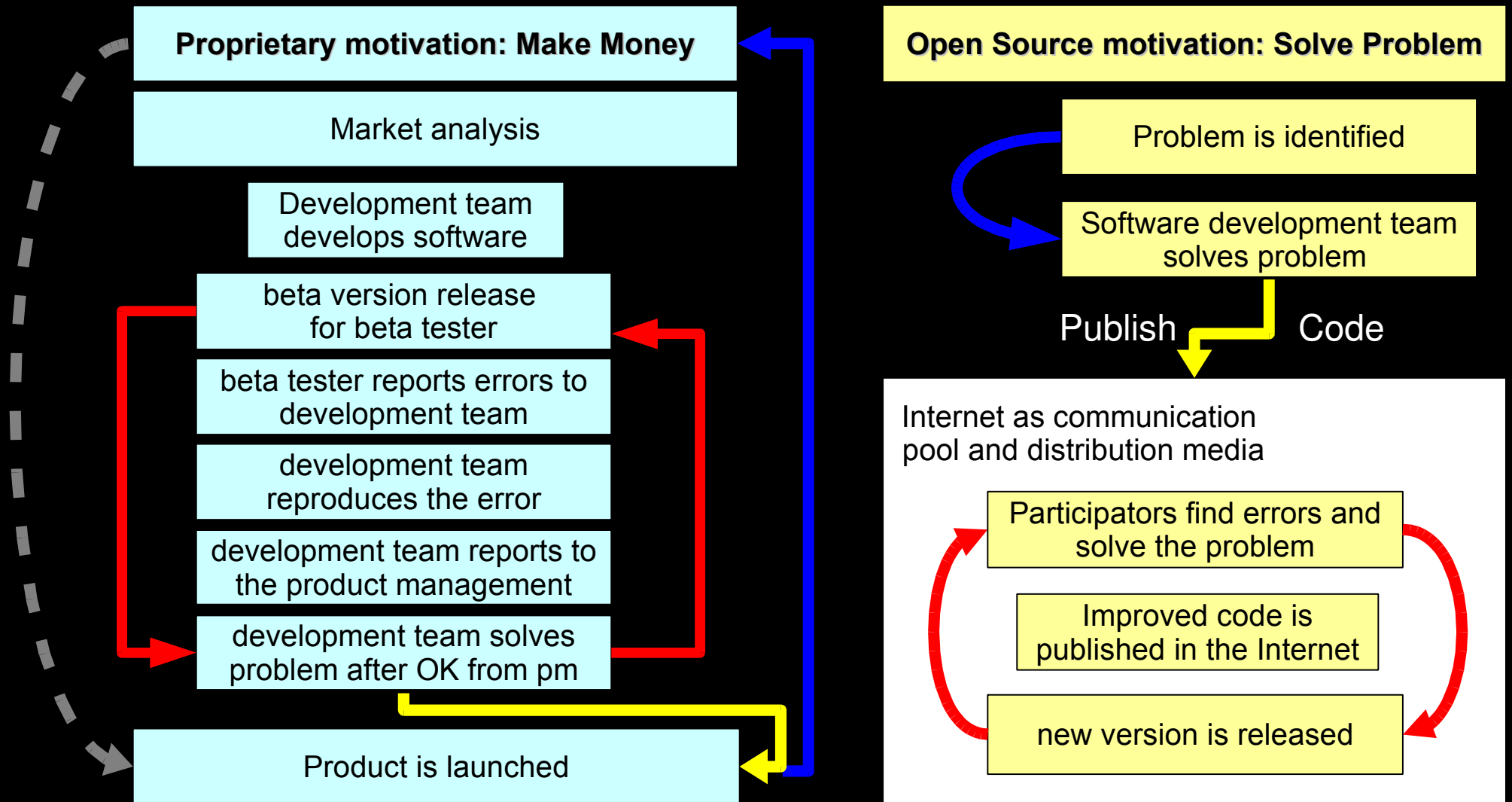


# Open Source Development

**Open Source** is a development model

- The **source code** of a software contains all the functionality in a readable format
- Only the source of a software can be **modified**
- End users generally **work** with the **compiled**, machine readable version
- Developers **prefer** open development models because **reuse** is a lot easier

# Product and Development Cycles



# Open Source Summary

Summarizing:

**Open Source is the superior development model**

All major software shops have recognized this and provide full service for Open Source (IBM, et. al.).

All major software vendors have either purchased open source shops or adopt open source methods and components (Oracle, ESRI, Microsoft, really all of them).

# Quality Open Source Software

Several hundred thousand open source software projects are hosted throughout the world, but:

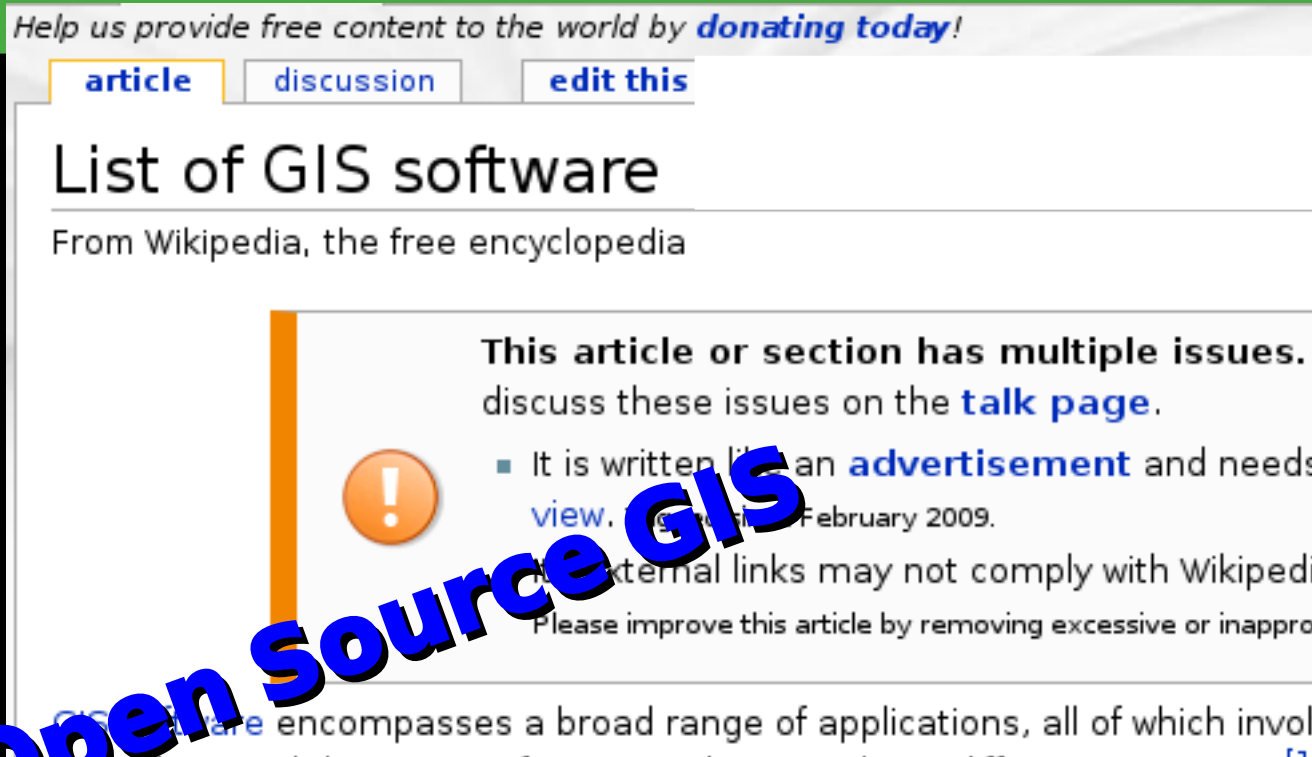
**Just because a software is stamped as  
"Open Source" does not make it  
good software!**

Where to find good geospatial software?

# On the Web – but it lacks orientation

**UbuntuGIS**

**SourceForge** world's largest open source development web site  
February, 2009, more **230,000** software projects



**SourceGIS**

**JAMES FEE GIS BLOG**

**FreeGIS.org**

**OpenSourceGIS.org**





# Open Source Geospatial Foundation



**...organizes spatial IT**

# Open Source Geospatial Foundation

- **OSGeo** is an international **non-profit** organization
- Founded in February '06 in Delaware, USA
- It is the **leading voice** for **Open Source** in the geo spatial domain
- The core **structure** has been gleaned from the Apache model
- It is based on **volunteer** work and **sponsorships**

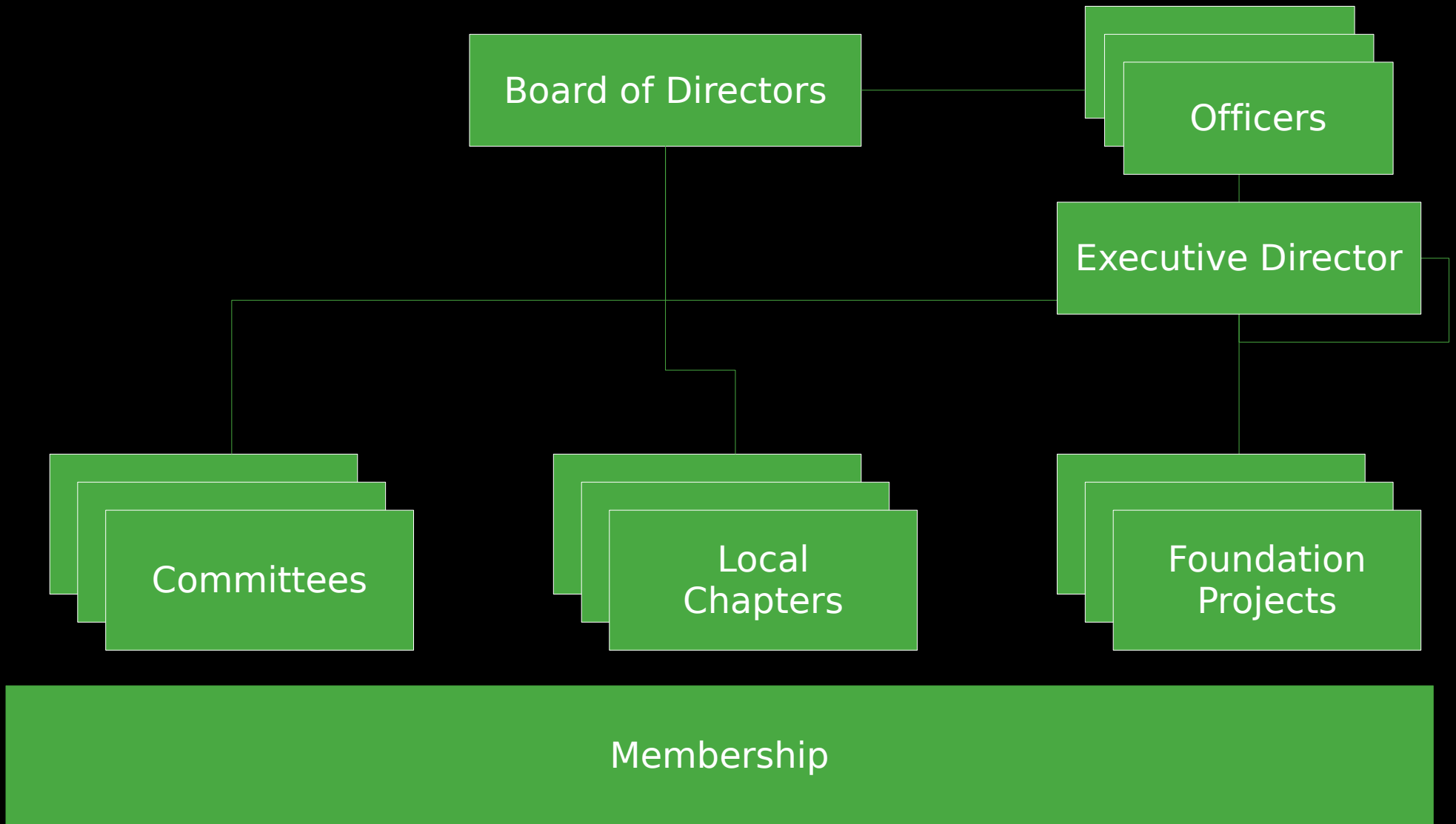
# Tasks 1/2

- Provide **resources** for **FOSS4G** Projects:
  - Infrastructure
  - Legal
  - Financial
- Promote **free spatial data** and access
- Create and promote a free **curriculum**
- Promote the use of **standards**
- Create and maintain a **quality brand**

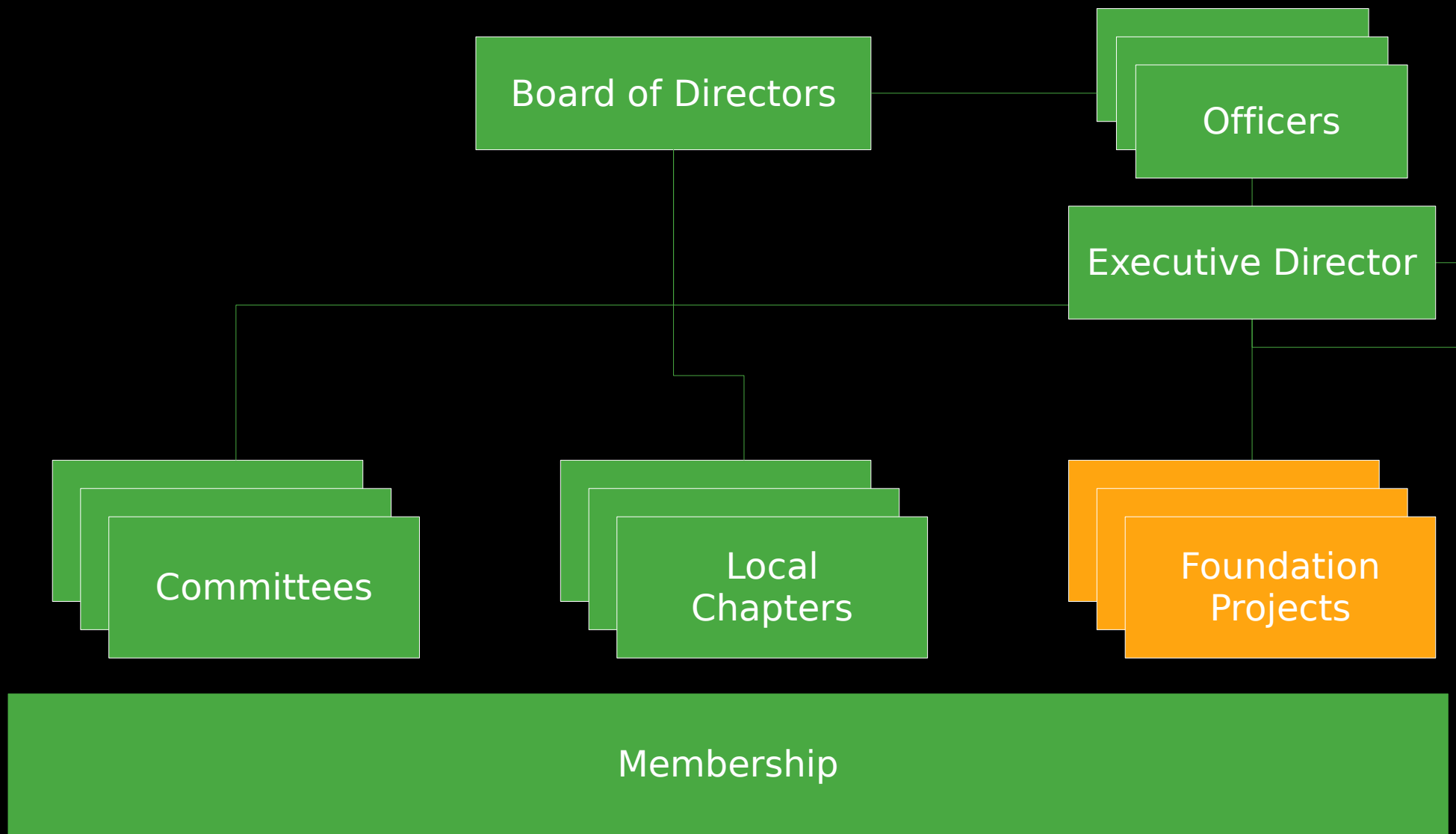
# Tasks 2/2

- **Support FOSS4G** on a global scale
- Organize **outreach** and promote **FOSS4G**
- Support and build **local** capacities for conferences, appearance at trade fairs, etc.
- Facilitate **inter-project** communication
- Build a **solid market** for business cases
- Interface with **industry** and **business**
- Support the **education** of domain experts instead of «brand-specialists»

# OSGeo Structure



# The Foundation's Projects



# OSGeo's Projects

Mapbender

UMN  
Mapserver

MapBuilder

Map Guide  
OS

OpenLayers

deegree

**web mapping**

GeoNetwork

**metadata**

Quantum  
GIS

OSSIM

GRASS  
GIS

gvSIG

**desktop GIS**

FDO

GDAL/OGR

GEOS

GeoTools

MetaCRS

PostGIS

**libraries**

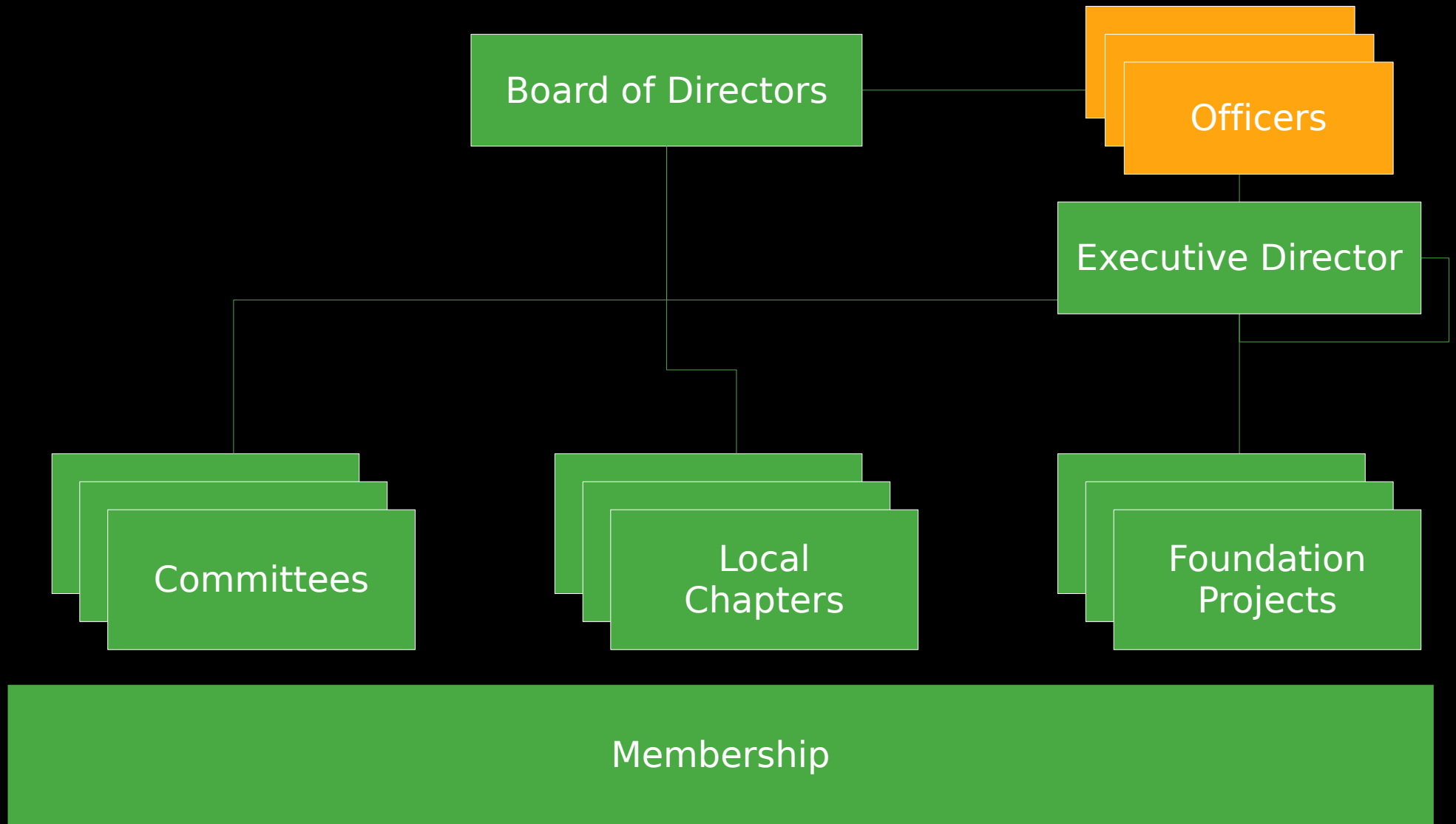
**Project  
in incubation**

# Incubator

- The incubator is a broad group of developers from all projects and languages
- Projects go through the official **incubation process** to assure highest quality
- To graduate from incubation the project needs to:
  - Abide by the open source rules of OSGeo
  - Document how it is governed and managed
  - Maintain documentation, mailing lists, etc.
  - Use source code repositories, ticket system...

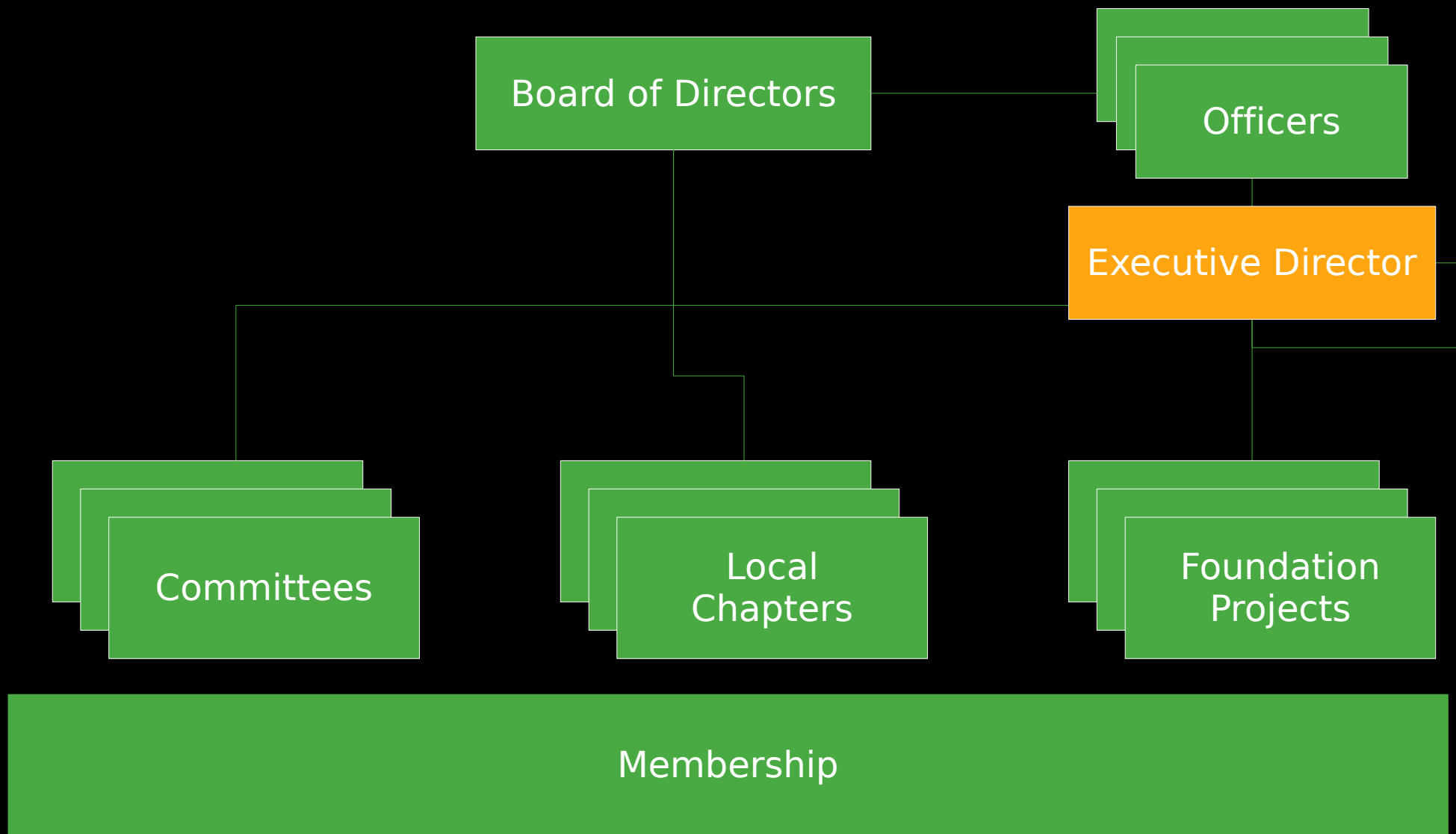


# Officers



- President
- Board of directors
- Treasurer
- Secretary
- Executive Director
- Graduated projects and committee chairs are vice presidents

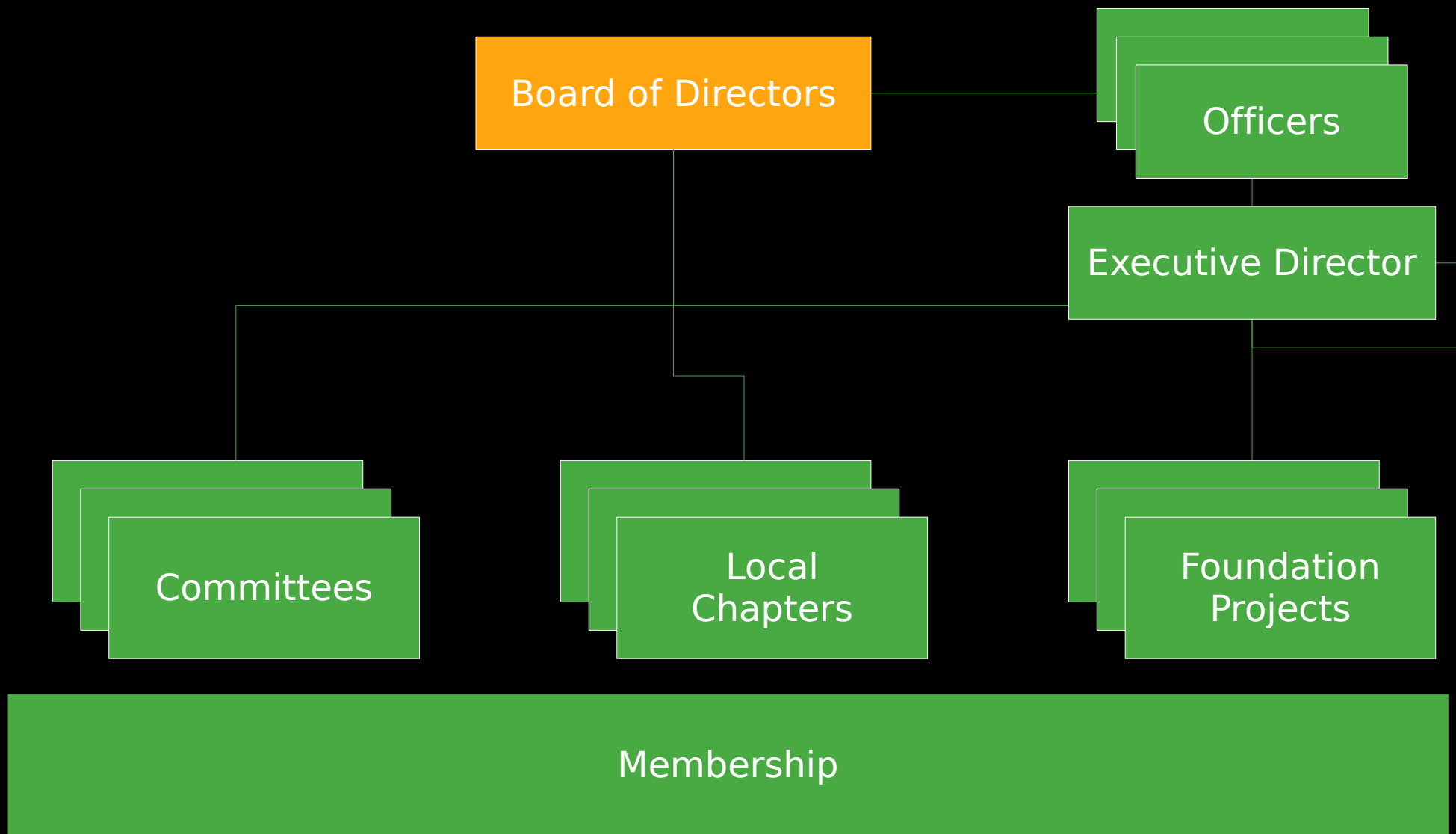
# Executive Director



# Executive Director

- The only paid employee
- **Contact** to the «outside»
- Facilitate and support internal **communication** of the OSGeo Community
- inform the board of directors about upcoming **decisions**
- Acts as a **mentor** for committees
- Helps to acquire new **sponsors**
- Compiles and edits the **annual report**

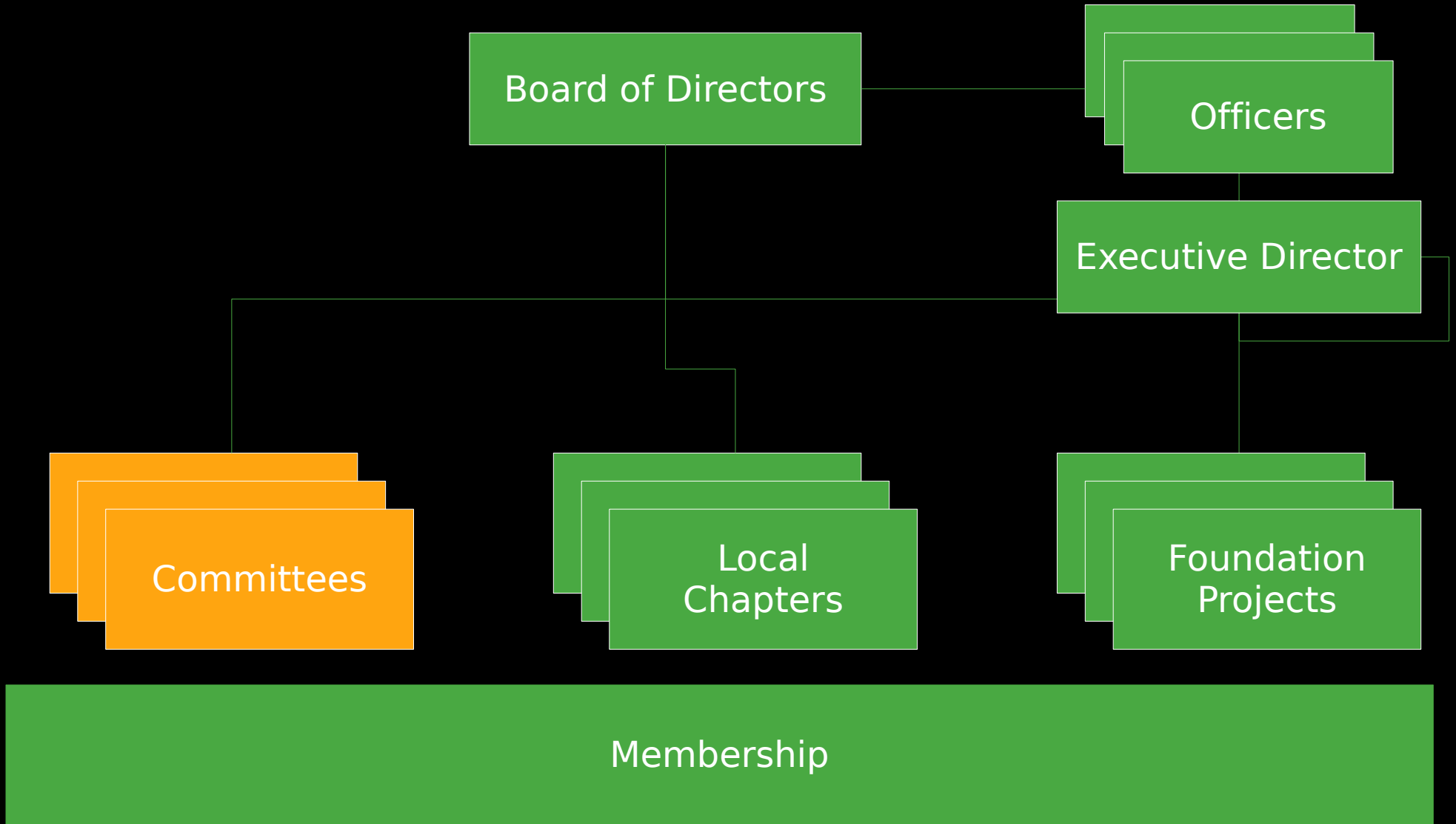
# Board of Directors



# Board of Directors

- is **elected** by the Charter Members
- formally **represents** OSGeo
- **employs** the Executive Director
- **approves** the annual budget
- approves changes to the charter, processes and **governance**
- approves the **graduation** of projects
- takes decisions that the community cannot take (financial **obligations**, contracts...)

# Committees



# Committees

Incubation

Conference

Funding

Marketing

Public  
Geodata

Education

System  
Administration

Web

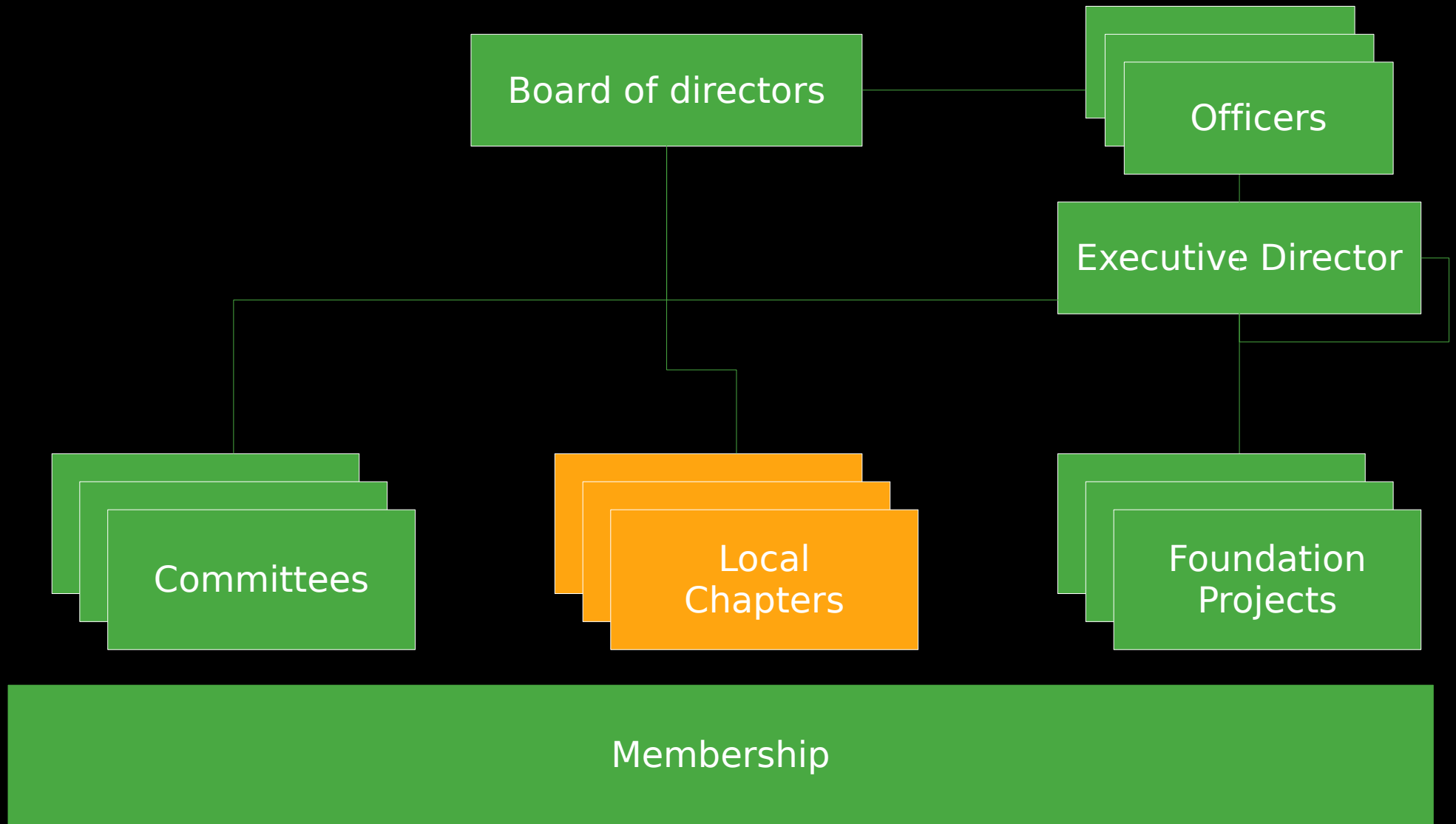
Journal



# Committees

- This is where all the **work** gets done
- Committees **self organize**
- Committees **communicate openly** through mailing lists and IRC meetings, etc.
- Progress is **documented** in the Wiki
- Everything is based on **volunteers' work**
- **All** are welcome to **join** a committee and to actively **participate** in all processes

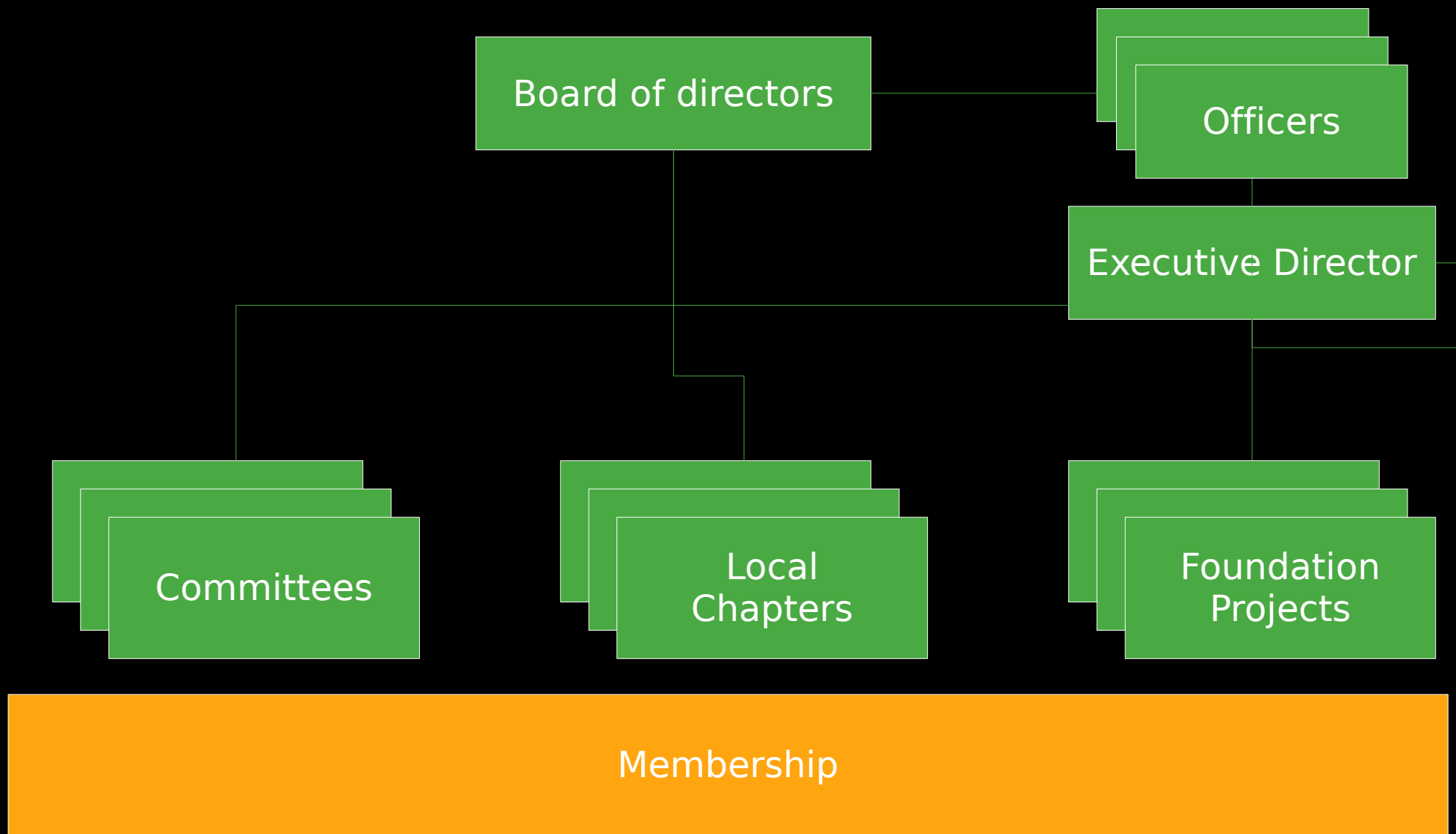
# Local Chapters



# Local Chapters

- There is a **growing number** of Local Chapters from Africa to Ottawa
- They are **groups** who share OSGeo's goals
  - in a common **geographic region**
  - or with a common **language**
- Some are **legal entities** others **informal**
- They bring **OSGeo** into the **local context**
- **localize** documents, software, web sites
- **support** and **promote** **FOSS4G** and **OSGeo**

# Membership



# Membership

- The most important bit in OSGeo are people
- To become part of OSGeo simply start to participate in any project, committee or local chapter
- **Simple** and **informal** registration
- Three types of membership
  - Participants **collaborate** using software, mailing lists, Wiki, tracking system, etc.
  - Members **work** and **vote** in committees
  - Charter Members **own** and **control** the foundation

# Conferences and Trade Fairs

What is OSGeo  
Foundation  
Structure  
FOSS4G Conf  
Conclusions

- FOSS4G
- Intergeo
- OSCON
- FOSSGIS
- GFOSS-IT
- CeBIT
- Systems
- Where 2.0
- ...



# Conclusions

- OSGeo **supports Free** and **Open Source Software** in the **spatial** domain
- You can participate and profit from this **community** of **spatial expertise**
- OSGeo is **roof** and **umbrella** for projects and communities
- It is a **platform**, to **create** and **share** software, information and know-how
- OSGeo works through **participation!**

# OSGeo SDI applications 1/3

Selection of spatial data infrastructures based on Open Source in Germany; Part 1

- Municipal: Rostock, Neubrandenburg, Stadt Brandenburg, Stralsund, Hamburg, Wolfsburg, Detmold, Wolfsburg, Bielefeld, Wuppertal, Wesseling, Bonn, Neuwied, Mainz, Landau, Nürnberg, Regensburg, Augsburg, Munich, Oberstdorf, Hundertwasser, City of Vienna, and many more...



# OSGeo SDI applications 2/3

Examples for spatial data infrastructures based on Open Source in Germany; Part 1

- County level: Oberbergischer Kreis, Elbe-Elster Kreis, Kreis Recklinghausen, Rhein-Erft Kreis, Kreis Stettin, Kreis Neuwied, and many more...
- Regional: Regionalverband Donau Iller, Regionalverband Ost-Württemberg, Business Region Bonn, GIW GIS Info Service, and many more..

# OSGeo SDI applications 3/3

Examples for spatial data infrastructures based on Open Source in Germany; Part 2

- Geoportal Rhineland Palatinate, Kanton Thurgau, Kanton Solothurn, Brandenburg, Baden-Wurttemberg, and many more...
- National: Bundesgerichtshof, Umweltdatenkatalog PortalU, Schadstoffemmissionskataster PRTR des Umweltbundesamtes, Geothermie-Portal, und viele mehr...

Many Thanks for your Attention

## Questions and Answers



[arnulf@osgeo.org](mailto:arnulf@osgeo.org)

# References

- <http://www.osgeo.org>
- <http://wiki.osgeo.org>
- <http://lists.osgeo.org/mailman/listinfo/discuss>
- <http://wiki.osgeo.org/wiki/Incubation>
- <http://www.flickr.com/photos/tags/osgeo>
- <http://www.mainz.de>
- <http://www.geoportal.rlp.de>
- <http://www.prtr.bund.de>
- <http://www.opengeospatial.org>
- <http://www.iso.org/tc211/>

## Creative Commons License Attribution-Share Alike 2.5 Spain

You are free:



to copy, distribute and transmit the work



to adapt the work

Under the following conditions:



**Attribution.** You must attribute the work in the manner specified by the author or licensor (but not in any way that suggests that they endorse you or your use of the work).

- For any reuse or distribution, you must make clear to others the license terms of this work.
- Any of the above conditions can be waived if you get permission from the copyright holder.
- Nothing in this license impairs or restricts the author's moral rights.

<http://creativecommons.org/licenses/by-nc/2.5/es/legalcode.es>